

SCIENCE ON STAGE FESTIVAL

PRAGUE 24.–27. 3. 2022

GUIDEBOOK

www.SonS2022.eu

FROM
TEACHERS
FOR
TEACHERS

name:

DEAR TEACHERS, DEAR FESTIVAL PARTICIPANTS

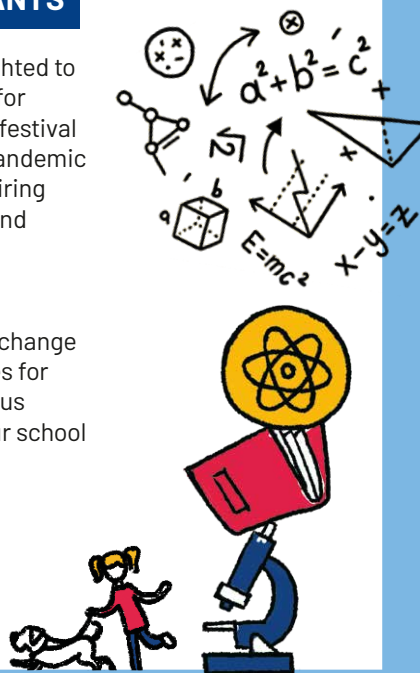
Welcome to the 12th Science on Stage festival. We are delighted to welcome you to Prague. We are happy to congratulate you for having been selected to participate in the Europe's biggest festival following the approach "from teachers for teachers". The pandemic has shown once more the important role of educators; inspiring students to study STEM, supporting students on their way and developing their skills.

Online or in person, teachers make the difference.

With this festival we want to offer you the opportunity to exchange ideas with dedicated colleagues and recharge your batteries for everyday life at school. We hope you will leave with numerous teaching ideas, many contacts, and a big cup of elixir to your school and your life.

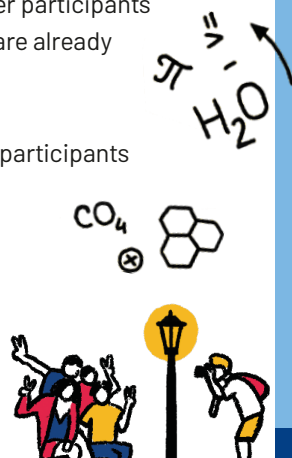
Enjoy the festival and your stay in Prague.

**Petra Prošková, director of Elixir to Schools
& Stefanie Schlunk, chair of Science on Stage Europe**



WE HAVE A FEW RECOMMENDATIONS FOR YOU:

- establish contacts with your colleagues from abroad
- go to workshops on time, with respect to workshop leaders and other participants
- finish your workshops by the designated time, maybe other people are already waiting behind the door
- write down your thoughts and ideas
- snacks during coffee breaks are just trifles, please share with other participants
- use your mobile phone, but always in a silent mode
- use the festival mobile app, it will help you to get on time to places that you wish to visit
- fill in and submit the feedback, when you are asked, especially after attending the workshop
- please follow current hygiene rules due to the covid pandemic
- and most importantly enjoy the festival ;)




REFRESHMENTS DURING THE FESTIVAL:

- **Breakfast within the accommodation** (Hotel Restaurant)
- **Afternoon Coffee breaks** (Hotel Restaurant)
- **Social dinner on Saturday only** (Hotel Restaurant)

Other refreshments are provided by the participants themselves.

FESTIVAL PROGRAMME



TIME	24. 3. THURSDAY	25. 3. FRIDAY		26. 3. SATURDAY		27. 3. SUNDAY
				8.50-9.00 Open day info (Main stage)		
9.00		9-11 Fair and Forum (competitive part)		9-11 Fair and Forum (competitive part)		9-11.30 Fair and Forum (competitive part)
10.00						
11.00	11-17 Registration and Set up Fair	11-12 Fair and Forum (non-competitive part)	11-11.50 Workshops	11-12 Fair and Forum (non-competitive part)	11.15-12.05 Workshops	11.30-13.00 Presentation and Awards Closing ceremony
12.00		12-13 Lunch (Hotel restaurant)		12-13 Lunch (Hotel restaurant)		
13.00		13-14 Highlight session Main stage		13-14 Highlight session Main stage		13-14 Lunch (Hotel restaurant)
14.00		14-15 Fair and Forum (non-competitive part)	14-14.50 Workshops	14-15 Fair and Forum (non-competitive part)	14-14.50 Workshops	14-16 Dismantling Fair and Forum
15.00		15-17 Fair and Forum (competitive part)		15-17 Fair and Forum (competitive part)		
16.00					16-17 Coffee break (Hotel restaurant)	
17.00	17-18.30 Opening ceremony	17-18 Fair and Forum (non-competitive part)	17-18 Coffee break (Hotel restaurant)	17-18.30 Cultural Programme (Main stage)		
18.00	18.30-20 Fair and Forum (non-competitive part)	18-22 Excursions in Prague, free time for delegates		18.30-19 Break		
19.00				19-22 Dinner with live music (Hotel Restaurant)		
20.00						



DISCLAIMER:

The program may be adjusted due to the Covid-19 situation. For up-to-date information, please follow the information on the TV screens in the festival area and in the Eventee application. Thank you for understanding.



MAP



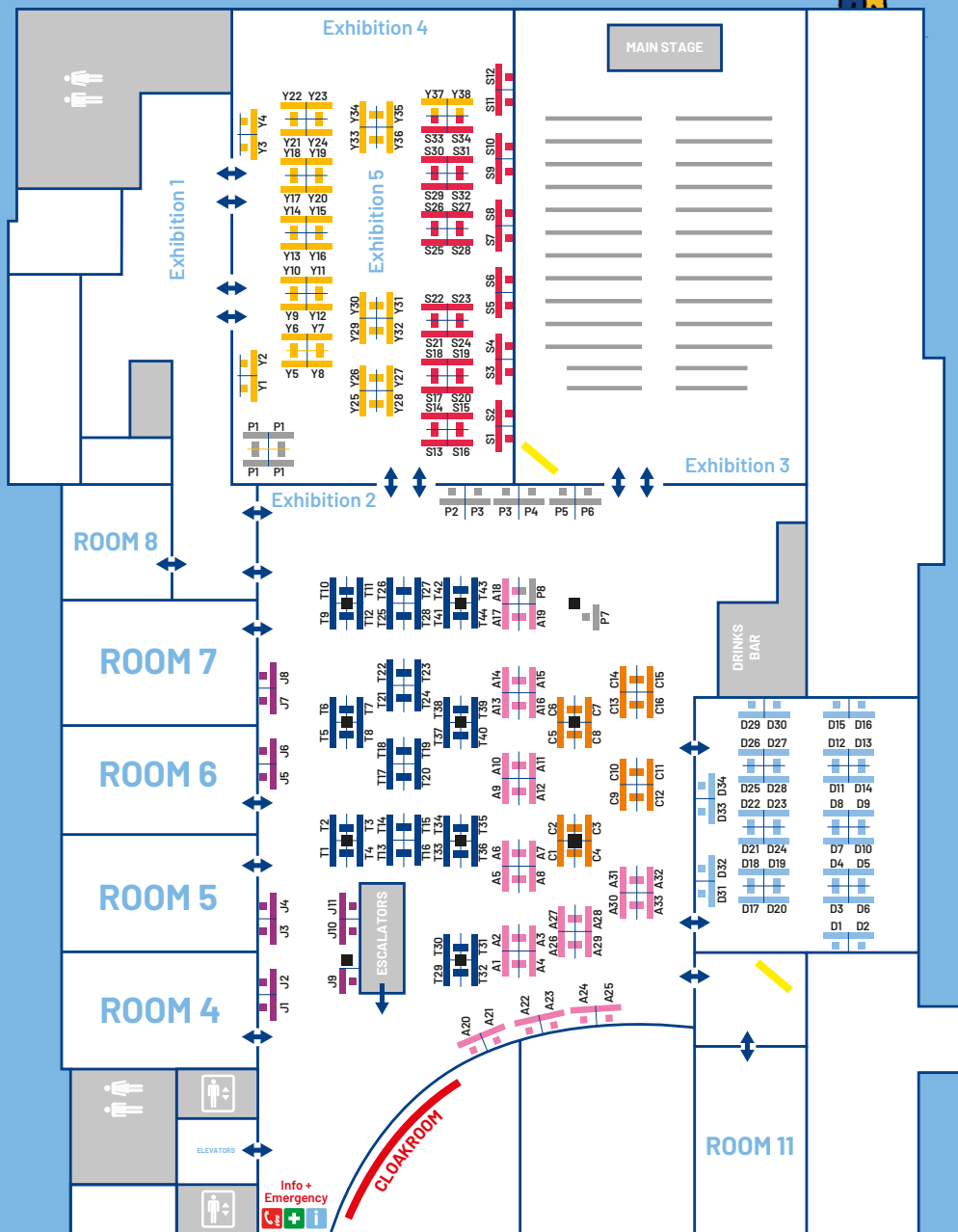
Entrance and exit



Toilets



Photo booth



GUIDING THEMES:

SCIENCE FOR
THE YOUNGEST

TECHNOLOGIES IN STEM
EDUCATION

STEM
WITH ARTS

JOINT
PROJECTS

SUSTAINABLE DEVELOPMENT
GOALS IN EDUCATION

DIVERSITY IN STEM
EDUCATION

COLLABORATION IN
STEM EDUCATION

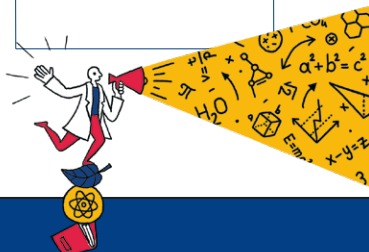
WORKSHOPS FOR WHICH I AM REGISTERED

HERE IS A SPACE FOR YOU TO WRITE DOWN WORKSHOPS TO WHICH YOU REGISTERED THROUGH THE EVENTEE APPLICATION.



TIME	TITLE	LEADER	ROOM
25TH MARCH 2022 (FRIDAY) 11.00–11.50 A.M.			
25TH MARCH 2022 (FRIDAY) 2.00–2.50 P.M.			

TIME	TITLE	LEADER	ROOM
26TH MARCH 2022 (SATURDAY) 11.15 A.M.–12.05 P.M.			
26TH MARCH 2022 (SATURDAY) 2.00–2.50 P.M.			



$$E=mc^2$$



$$a^2+b^2=c^2$$



IMPORTANT CONTACT INFORMATION

European emergency number ☎ 112

Clarion Congress Hotel Prague



www.clarioncongresshotelprague.com/en/contact



Reception T: +420 211 131 139



Freyova 33, 190 00 Prague 9 - Vysočany



OUR WEBSITE

Organization team contact details



sons2022@elixirdoskol.cz



Helpline: +420 720 139 422



www.sons2022.eu/en/contact-us/about-the-organizer



Elixír do škol, z. ú. | Olbrachtova 1929/62 | 140 00 Praha 4

Science on Stage

FESTIVAL SonS2022



www.sons2022.eu

Science on Stage



www.science-on-stage.eu

FB event



Science on Stage 2022



@scienceonstage2022

WIFI

Free Hotel Clarion

#sons2022

#scienceonstage2022

PLEASE RESPECT 3 COVID RULES:



WEAR A MASK



WASH YOUR HANDS



KEEP YOUR DISTANCE

FESTIVAL SUPPORTERS

ORGANIZER



IN COOPERATION WITH



MAIN EDUCATIONAL PARTNER



MAIN FINANCIAL SUPPORTERS



PATRONS OF THE GUIDING THEMES

EDUCATIONAL PARTNERS



BUSINESS PARTNER



LEGAL PARTNER



VISUAL PARTNER



OTHER SUPPORTERS

PATRONAGE



MAIN MEDIA PARTNER



SPACE FOR YOUR NOTES





